

est 1979

Jeremy
Leaf & Co.



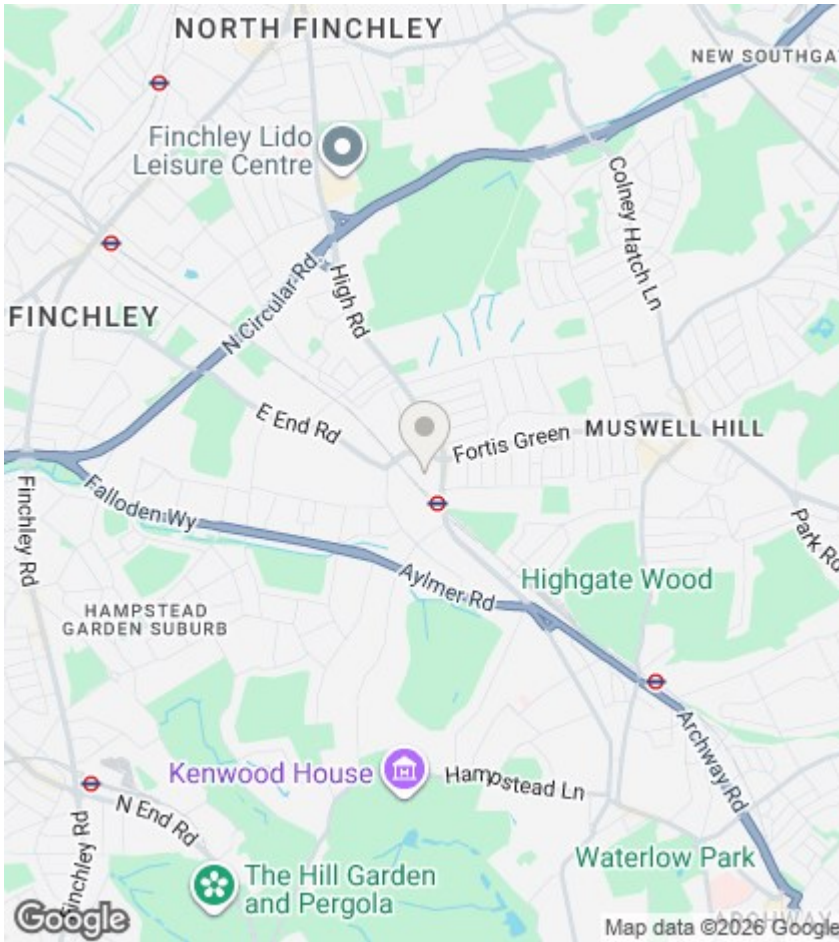
Stokes Court, Diploma Avenue, N2 8NX

£199,000

- Communal Gardens
- 153 Years Lease
- Large Storage Cupboard
- One Double Bedroom
- 24 Hour Warden Assisted
- New Electrical Installation Certificate
- Chain Free
- New Fire Door

98 High Road, London, N2 9EB
020 8444 5222

eastfinchley@jeremyleaf.co.uk
<https://www.jeremyleaf.co.uk/>



Directions

Viewings

Viewings by arrangement only. Call 020 8444 5222 to make an appointment.

Council Tax Band:

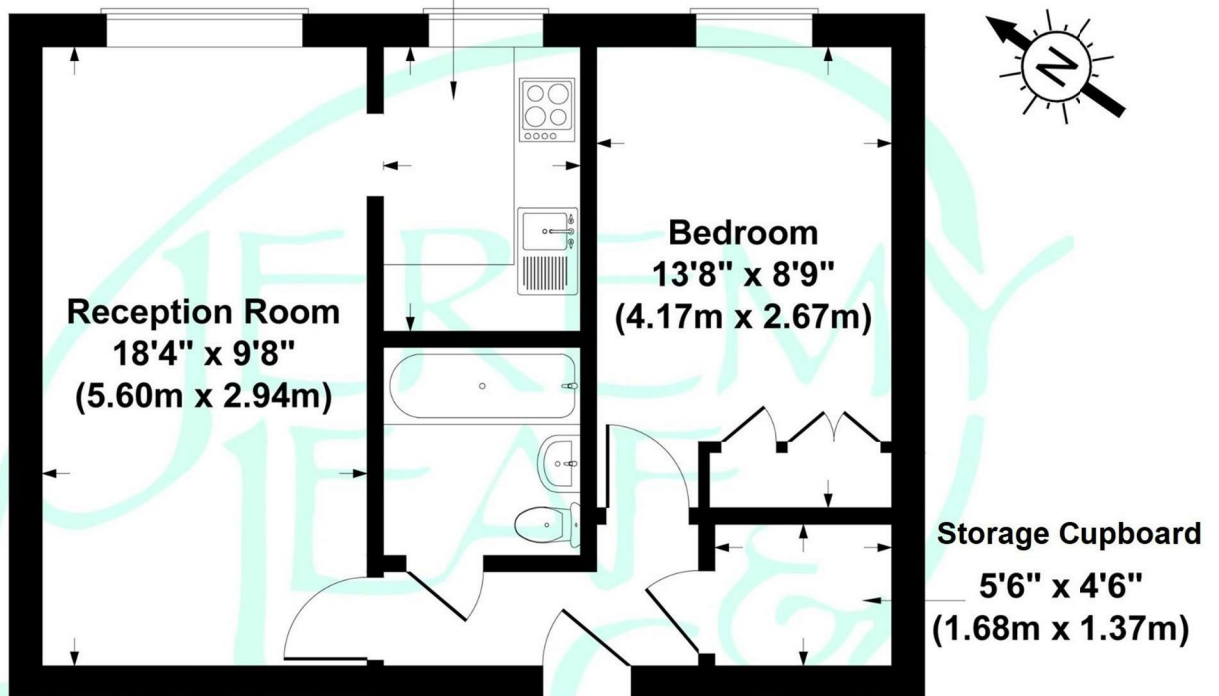
C

EPC Rating:

C

Energy Efficiency Rating		Current	Potential
Very energy efficient - lower running costs			
(92 plus)	A		
(81-91)	B		
(69-80)	C	77	81
(55-68)	D		
(39-54)	E		
(21-38)	F		
(1-20)	G		
Not energy efficient - higher running costs			
England & Wales		EU Directive 2002/91/EC	

(2.53m x 1.78m)



Third Floor

Stokes Court, London, N2

Gross Internal Area 463 sq ft / 43 sq metres